



## Key Features

### General

- Real time monitoring of UNIX, Linux and Windows servers
- Alerting and notification
- Service level reporting
- Data collection
- Event History
- Auto correction
- Problem escalation
- Auto discovery
- Role based access

### Server Monitoring

- CPU performance & utilization
- Server availability
- Disk I/O rates
- Disk usage
- Filesystem free space
- Hardware configuration
- Paging rates
- Paging file/swap space usage
- Physical and virtual memory usage
- Processes (memory hogs, cpu hogs and specified processes)
- Network statistics
- Error log monitoring
- System services (including management functions like "start service", etc)
- System up time

### Overview

**sentinel3G** delivers enterprise-wide performance and availability monitoring for:

- UNIX servers
- Solaris
  - AIX
  - HP\_UX
  - Tru 64
  - Unixware
- Linux servers
- Redhat
  - SuSe
  - Debian
  - BSD
- Windows servers
- NT
  - 2000
  - 2003
  - XP
  - Vista

It is a powerful technology that supports data collection, event detection, response management and reporting via its unique Knowledge Base architecture.

Knowledge Bases standardize the rules, responses and data needed to monitor servers and contain the agents, sentries, states, responses and documentation, needed to monitor a particular operating system environment. They enforce best practice and encapsulate expertise needed to determine when things are not right, and what to do in response.

Many Knowledge Bases include pre-install and post-install scripts on each host to "discover" whether it is necessary to install the Knowledge Base and if so to customize the configuration appropriately.

All Knowledge Bases contain specific sentries to monitor the performance and correct operation of the target server's operating system, network and devices.

Standard server monitoring functionality includes:

- Identifying performance problems in areas such as CPU, disks, file-systems and memory
- Monitoring network connectivity to other hosts on the LAN or WAN and to selected Internet hosts

## Server Monitoring

- Directly monitoring **syslog** and **Event Log** to provide real time alerting of system error messages
- Monitoring of Windows services, printers and user selectable processes
- General system information (CPU type and speed; RAM installed; version and build of Windows; uptime)

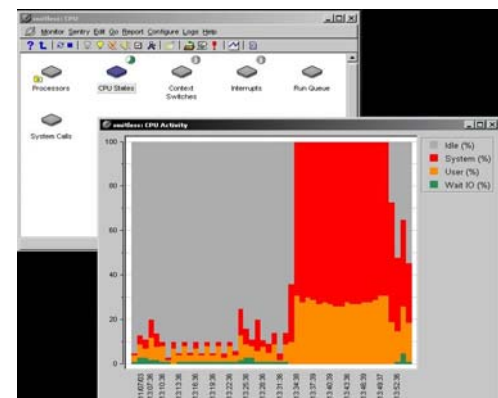
**sentinel3G** consoles can be configured to organize information on server performance as required and provide role-based access to service level reports and performance metrics.

Powerful charting and graphing is supported with single click export to spreadsheet and PDF. **sentinel3G** consoles are available for most common web browsers plus Microsoft Windows™ and X Windows desktops.

Site specific extensions to standard Knowledge Bases containing additional server monitoring functionality can quickly and easily be developed to meet local requirements.

**sentinel3G** provides a standardized monitoring interface across multiple server platforms allowing easy comparison of server performance across heterogeneous networks.

**sentinel3G** is ideal for organizations that want to avoid cost and complexity or need to integrate ad hoc/open source solutions into a secure, auditable and fully supported monitoring environment.



### Australia

Functional Software Pty Ltd  
Australian Technology Park  
Garden Street  
Eveleigh, NSW 1430  
Australia  
Phone: +61 2 9209 4362  
Fax: +61 2 9310 7561

### Malaysia

System Management Services Sdn Bhd  
Suite 327, Block A, Level 3, Kelana Centre Point  
No. 3, Jalan SS 7/19,  
Kelana Jaya, 47301  
Petaling Jaya Malaysia  
Phone: +60 3 7804 0288  
Fax: +60 3 7804 0200

### Internet

[www.fs.com.au](http://www.fs.com.au)  
[www.smsb.com](http://www.smsb.com)  
[inform@fs.com.au](mailto:inform@fs.com.au)

